

Wingmoor Farm East: Integrated Waste Management Facility

Permitted Activities

Traffic

Vehicle Types

Waste is delivered to the site by a range of appropriate vehicles. Each load is weighed and checked before unloading in the appropriate landfill/treatment area. Types of vehicles using the site in 2007* are illustrated in Figure 8 opposite.

HGV Arrival Times

Around 100 Heavy Goods Vehicles (HGVs) per day visit the site, with 99.8% of vehicles arriving between 7am and 5pm. Deliveries to the treatment plant outside of these hours typically occur once per week.

The non-hazardous waste operation represents over 85% of vehicle movements, of which nearly half are skips, generally from Cheltenham and Tewkesbury.

Vehicle numbers will not change greatly. Waste arisings may increase and the number of alternative landfills will reduce, but this will be offset by an increased diversion away from landfill.

The graph along side in Figure 9 details HGV arrival times, indicating a gradual start and then a constant flow with an early afternoon peak, mainly attributable to the returning Grundon collection vehicles. Traffic tails off rapidly by 4.30pm.

Vehicles based at the Wingmoor Farm East site annually collect, on average, 30,000 tonnes of local waste. The three site-based hazardous waste APC tankers collect 12,000 tonnes of APC waste - approximately 50% of the APCs delivered to the site for treatment. Non site-based Grundon vehicles deliver a further 2,000 tonnes of mixed waste. 75% of all waste brought to the site is delivered by third parties.

* 2007 statistics are used throughout this section as the 2008 consolidated/validated data was not available at the time of going to press

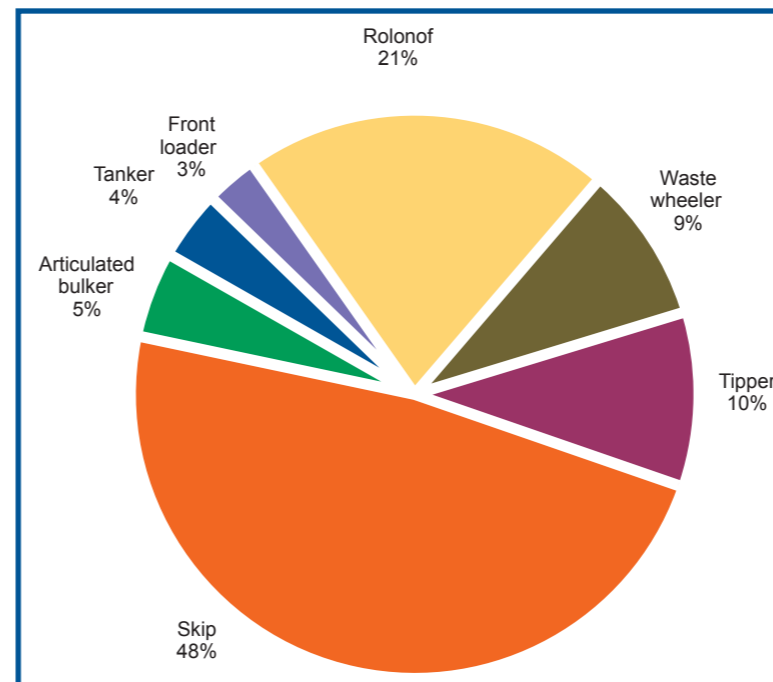


Figure 8: Waste vehicle types

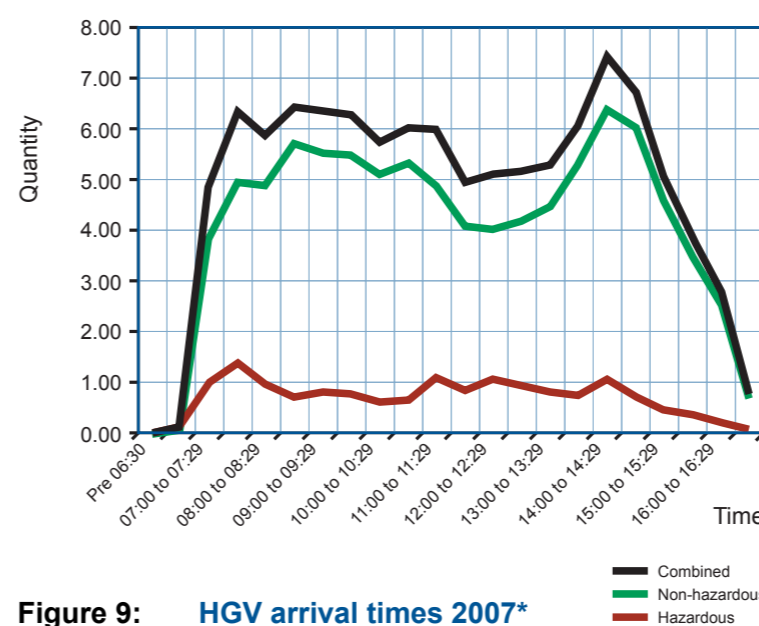


Figure 9: HGV arrival times 2007*



Rolonof



Waste wheeler



Front loader



Tanker



Bulker



Tipper



Skip



www.grundon.com