

Wingmoor Farm East: Integrated Waste Management Facility

Permitted Activities

Disposal of asbestos

All asbestos in buildings must be identified, recorded and eventually removed. Asbestos was used for many years in public and private buildings for roofing, thermal insulation and boiler laggings, but is dangerous when it starts to break down and release fibres into the air.

Process

Such material needs to be professionally removed, transported and disposed of at a purpose-designed site, where it poses no danger to people or the environment. Grundon has been doing this for 20 years at a number of sites, including Wingmoor Farm East.

Disposal Procedures

In 2007*, 4,200 tonnes of asbestos were deposited - 2% of the total waste input.

Comprehensive asbestos monitoring and disposal procedures, based on accepted industry best practice, have been agreed with the Environment Agency (EA) and incorporated into the site Permit. They ensure there is no environmental pollution or harm to health from asbestos disposal. Only cement-bonded and sheet asbestos are accepted at the site, not loose fibrous asbestos (lagging).

All the necessary preparations and precautions are made on site in advance of asbestos deliveries. The material is deposited in the dedicated, hazardous waste landfill cell and then covered immediately with either treated APC residues or soil. To minimise the risk of any asbestos fibres being released to atmosphere, the sheets of bonded asbestos are not broken up. Dedicated air quality monitoring is carried out to demonstrate the disposal system is working properly. All monitoring data is provided to the EA.

Disposal of contaminated soils

The largest volume of hazardous waste delivered to the site is contaminated soils - generally removed from brownfield development sites in and around cities - and old tarmac that is now classified as a hazardous waste. In 2007*, 27,900 tonnes of this material were deposited at Wingmoor Farm.

* 2007 statistics are used throughout this section as the 2008 consolidated/validated data was not available at the time of going to press

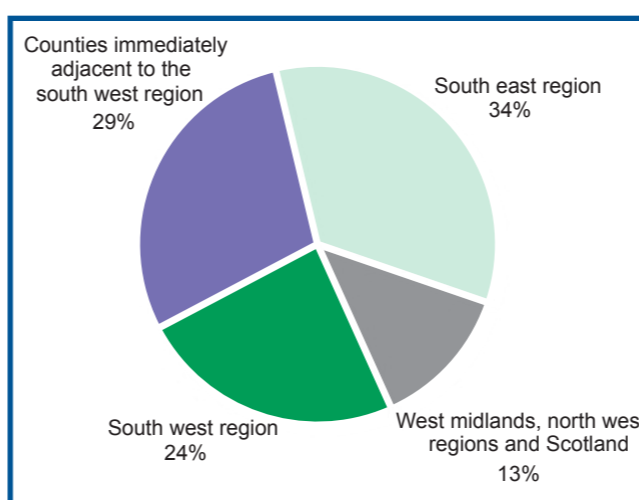
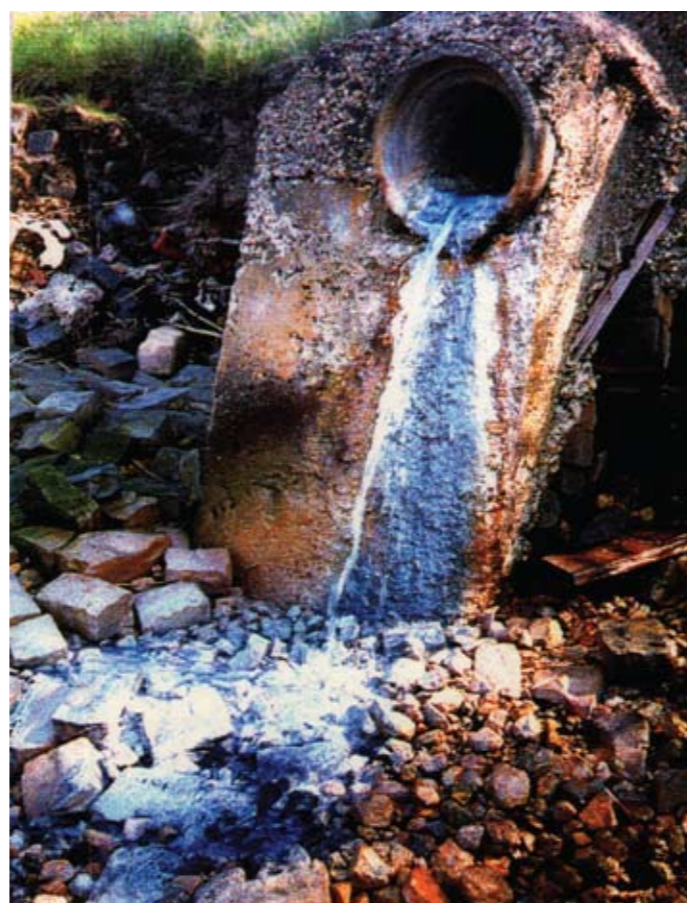


Figure 2 identifies the general sources of all the hazardous waste disposed of at the site during 2007*. The waste level for 2008 is slightly reduced, with less asbestos and contaminated soils as a result of the declining development market. However, volumes of biomass APC residues have increased, reflecting the growing interest in this type of sustainable energy development.

Figure 2 Sources of all hazardous waste disposed of at Wingmoor Farm East



www.grundon.com