

Wingmoor Farm East: Integrated Waste Management Facility

Background

The European Commission (EC) has established a common waste framework (the waste hierarchy) which promotes waste minimisation, re-use and recycling over landfill disposal. The hierarchy recognises that, for some years to come, landfill will remain the only management option for some wastes. Over time, reflecting stronger environmental controls, site operational practices have been regulated and standardised with minimum standards set for the location, design, construction and operation of landfills.

European Waste Legislation

The EC Landfill Directive:

- sets targets to reduce the landfilling of biodegradable waste from households
- requires all landfilled waste to be pretreated
- requires higher engineering and operating standards
- bans the mixing of hazardous and non-hazardous waste in the same site
- bans liquid, flammable, explosive, corrosive and oxidising waste from landfill
- places stringent controls on the disposal of hazardous waste to landfill. This effectively results in very few dedicated hazardous waste landfills in the UK.

The EC Hazardous Waste Directive:

- provides the legal definition of hazardous waste
- regulates the documentation associated with the transport of hazardous waste.

The EC Waste Catalogue:

- classifies waste and categorises it according to what it is and how it was produced
- defines materials such as fluorescent tubes, TV/computer monitors and scrap cars as hazardous wastes – but these are not allowed to go to landfill.

Integrated Waste Management

Different types of waste facilities are needed to manage the wide range of wastes produced by modern society. At its integrated waste management facility at Wingmoor Farm East, Grundon accepts the following:

- construction, demolition and excavation waste
- non hazardous waste to landfill, including residues from recycling facilities
- hazardous waste to landfill, such as asbestos and contaminated soils resulting from the clearance and development of brownfield sites
- waste to be recovered for recycling at the adjacent MRF, from local businesses and commerce.
- air pollution control (APC) residues from paper mills, biomass plants, combined heat and power plants and energy from waste facilities. This waste is treated in the specialist treatment plant and subsequently landfilled.

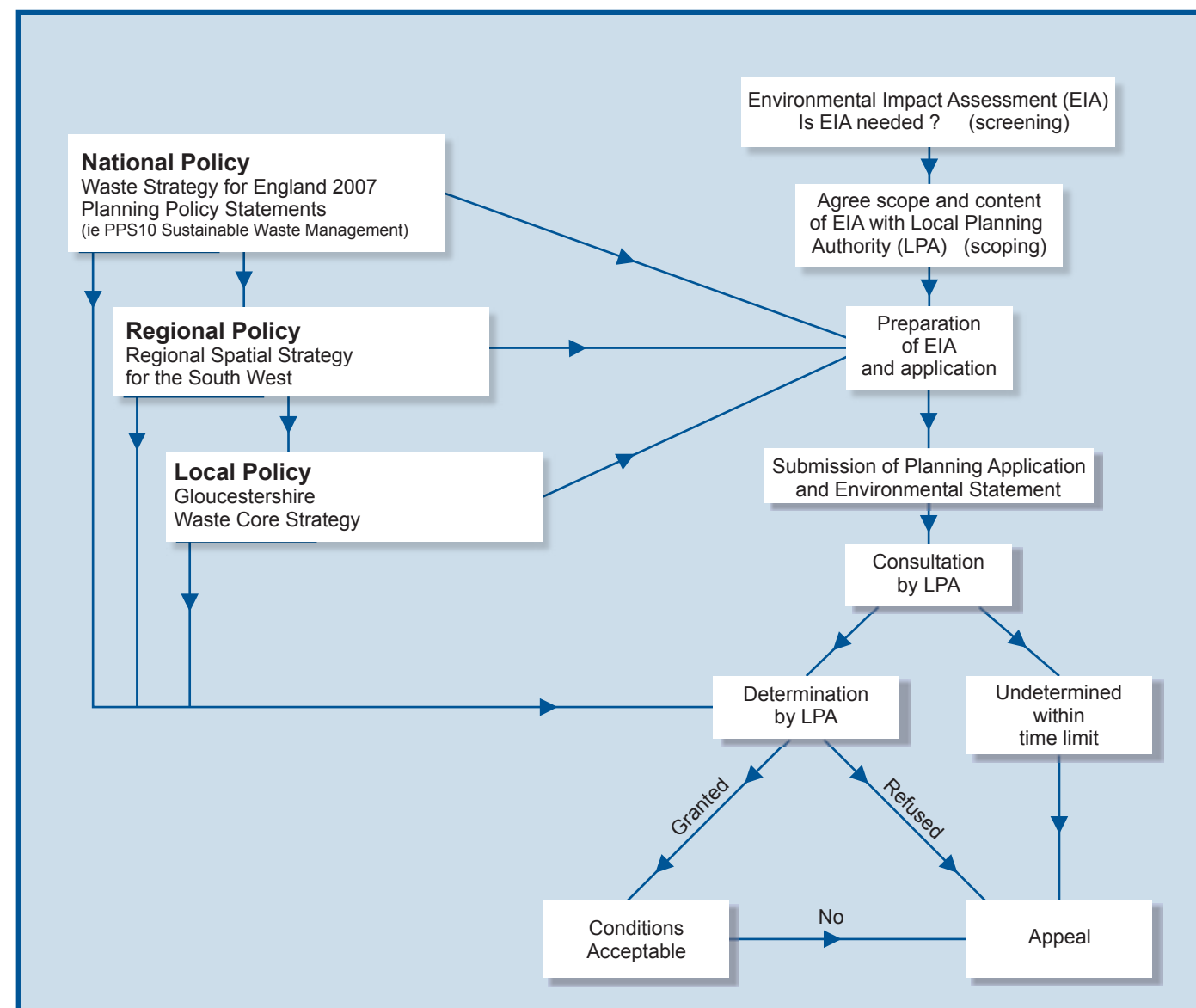


Figure 1 The link between waste planning & policy processes



The five types of waste listed opposite all go to separate facilities on site. Each has its own Environmental Permit issued by the Environment Agency to regulate the facility.

Every year, Gloucestershire landfills approximately 700,000 tonnes of non-hazardous and inert wastes. An additional 375,000 tonnes of municipal, commercial and industrial, metal and inert wastes are also recycled. Although recycling continues to increase, the ongoing landfill disposal of 700,000 tonnes of waste will only reduce over time. Wingmoor Farm East is currently one of only three non-hazardous waste landfills remaining in Gloucestershire and approximately 150,000 tonnes of these wastes are disposed of there each year. In five years time, one of the existing sites is expected to close. If the Grundon site was also to close, the county would only have the Cory site off Stoke Orchard Rd to provide disposal capacity in the medium to long term. Currently, Gloucestershire County Council is not proposing to identify or permit any additional capacity elsewhere.

Hazardous Waste Arisings

Around six million tonnes of hazardous waste (Source: Environment Agency 2006 data) was produced in England, Scotland and Wales and sent to treatment and disposal facilities. Of this, slightly less than 900,000 tonnes was sent to landfill. There are now only 14 hazardous waste landfill sites in the UK. Grundon has been accepting hazardous waste (historically known as 'special waste') at Wingmoor Farm East since 1992 and the site has long been of significant regional importance for hazardous waste disposal. Notwithstanding this, only one in four tonnes of waste received at the landfill is hazardous.

Planning Applications

Everyone produces waste, by virtue of living in the twenty first century and taking advantage of the consumer choices offered by an industrial society. To ensure society's waste disposal needs are met safely and efficiently, planning and waste policies are designed to complement each other, to provide long term facilities that will have minimum impact on the environment and human health. Planning applications are considered against the background of national, regional and local Planning Policy and Waste Planning Statements.

Waste planning applications are submitted to and determined by the waste planning authority, in this case Gloucestershire County Council. For significant developments, the application must be accompanied by an Environmental Statement (ES). This is generally prepared by external consultants, calling on specialist skills as appropriate.

Once an application has been received, the waste planning authority will advertise it in the local media and send it out for consultation to a range of statutory consultees and any other interested organisations and individuals. The consultees will consider their views on the application and submit them for consideration by the planning authority. The authority will evaluate all the responses, request further information if necessary and will then make its decision, taking into account all relevant issues.

Some developers, like Grundon, may carry out their own consultation with non-statutory consultees, including the general public. We are holding this exhibition before we submit our planning application, so comments and responses will inform both the EIA process and the refinement of our proposals.

GRUNDON

www.grundon.com