

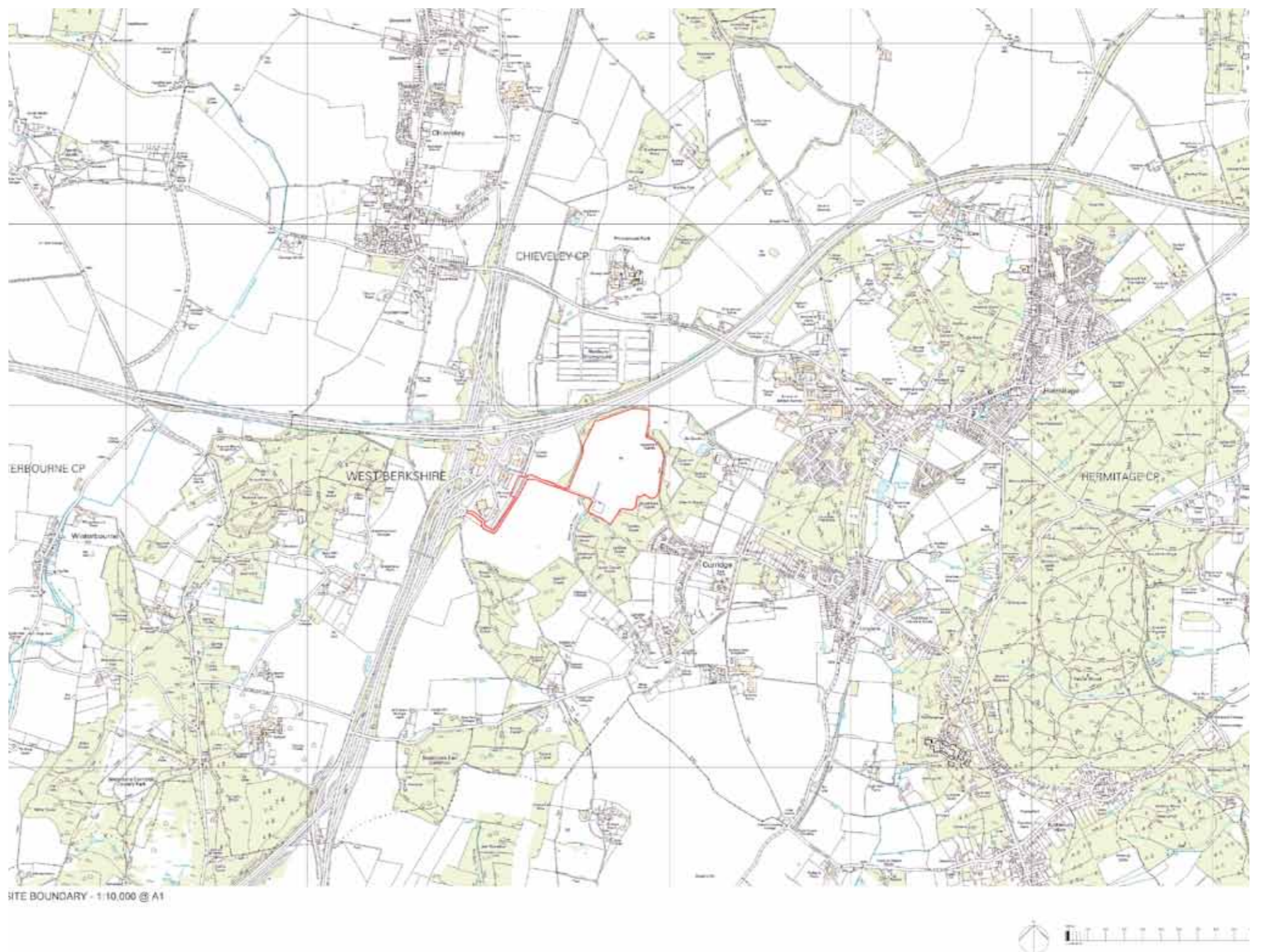
# Background

## Chieveley Energy from Waste

The site for the proposed EfW facility is part of the Old Kiln Quarry adjacent to the MOTO services and the M4/A34 junction (see site location plan below). The land is currently used for sand and gravel extraction and a planning application which seeks to expand the sand and gravel operations has recently been submitted to West Berkshire Council. This is a completely separate, independent application which will be considered by the Council on its own merits.

Grundon is continuously seeking further opportunities to help local authorities like Berkshire manage their waste and energy needs. The company has been researching the Berkshire core waste strategy and believes there is significant need for a new facility to treat both residual household waste and commercial and industrial waste. The Old Kiln Quarry site was initially identified early in 2010, but wide ranging technical evaluations needed to be carried out to confirm the suitability of the site and progress the planning application and Environmental Statement.

A Scoping Document was submitted to West Berkshire Council in December 2010 as the first stage of a comprehensive process that includes this public consultation event and the possibility to establish a Community Liaison Group.



By Appointment to  
Her Majesty The Queen  
Waste Management  
Grundon Waste Management Ltd  
Colnbrook



[www.grundon.com](http://www.grundon.com)